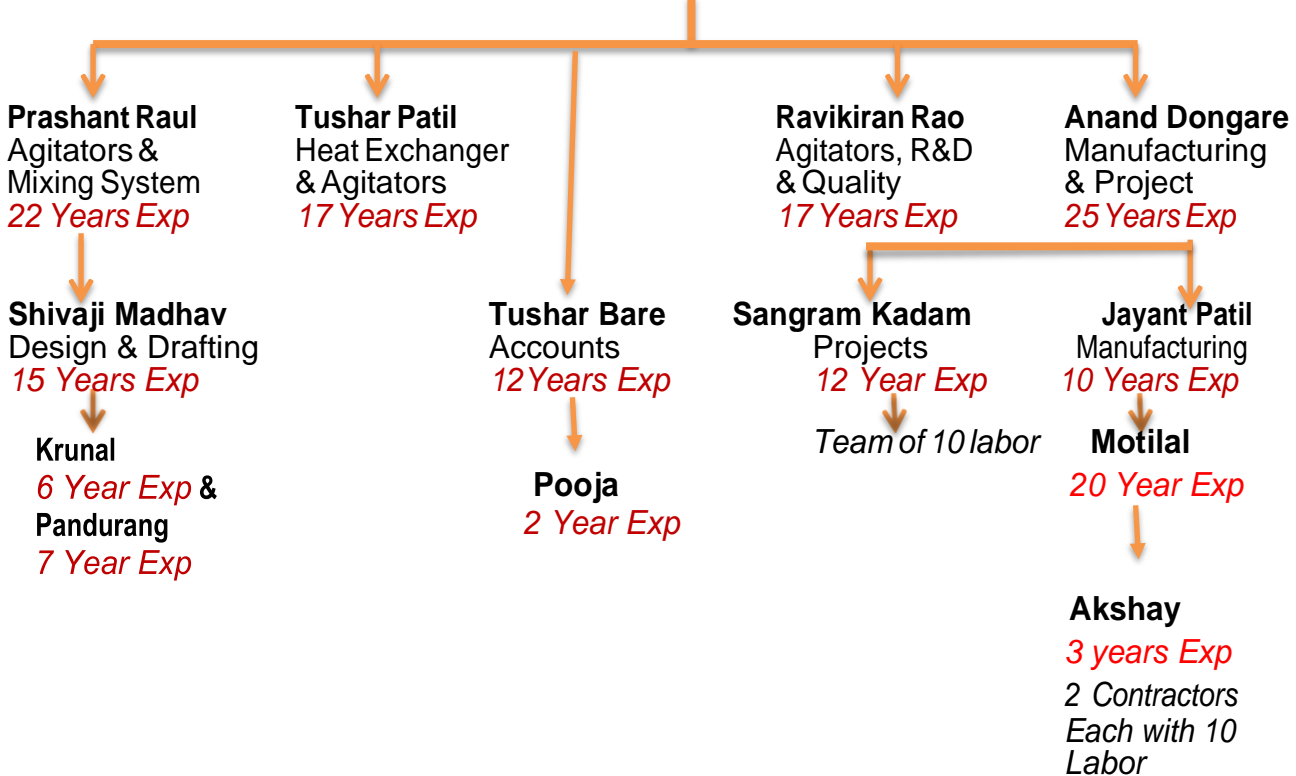


Introduction of Mixtrap Solutions Pvt Ltd

Dear Sir,

We the Team Mixtrap have a great pleasure to introduce ourselves as one of the most trusted, experienced & preferred Engineers in Design & Manufacturing of agitators & mixing Systems. With individual experience of more than 15 years in Mixers & various process equipment catered from some of the leading process Industries in India.

THE TEAM



Located at "Plot#165 & 166, Sector-7, MIDC Bhosari", a **20000 Sq. Ft** totally covered & fully equipped shop; we cater to most of Industries across globe. With Agitator/Mixer as our core business line, we are also into associate equipment like Reactors, Vessels & Heat-Exchanger.

Supplying **more than 1600 Industrial equipment** to over 75 satisfied clients; we are the proud vendors to reach this mark with trust & support of our clients. We always prefer High performance & low maintenance agitator to be supplied for hassle free operation & maintenance free equipment to our customer. For this, we mostly avoid use of external bearing-housing & flexible coupling which are most maintenance-pro items & first-to- fail items in agitators. To achieve a sturdy design; we select sturdy and higher size Bevel/parallel Helical gear-boxes which can take all required load & can deliver results (Mainly from European Gearbox manufacturers). These gearboxes are either SEW/NORD or any reputed make. 95% of agitators manufactured under our design are without external-bearing housing and are in successful operation since supplied.

We are preferred by our clients for our compact Agitator design. Repeat orders from our customers are best example of trust our customers have in us.



Because.....

It's not the



It's Brain

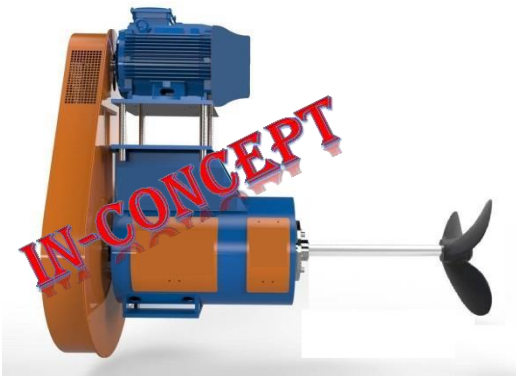
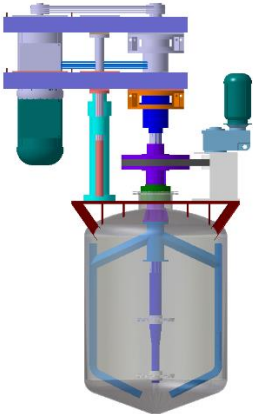
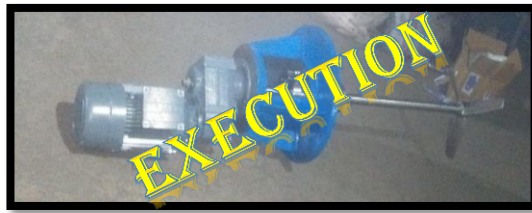
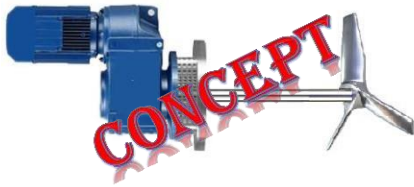


*behind the Agitator
that works.*



We have had many equipment in concept & those are coming into execution one after another. Some of those are highlighted below;





Our product range is as below;

- # Top & Bottom Entry agitators with high efficiency axial flow impellers*
- # Side Entry agitators with Fixed & swivel angle*
- # Twin Shaft & High Speed Dispenser*
- # Static Mixer (Inline mixers)*
- # High Speed Mixer (Homogenizer)*

Industries we cater;

- # Food & Beverages*
- # Veg Oil*
- # Sugar & Distilleries*
- # Pharmaceuticals*
- # Specialty Chemical*
- # Polymer*
- # Fertilizers*
- # ETP, STP*
- # Paint & Adhesives*

In brief, MIXTRAP has the following distinct advantages to offer its clients:

- # State of the Art Design*
- # Minimum Cost of Ownership*
- # Mechanical Reliability*
- # Minimum Lead Times*
- # Unique design to minimize maintenance.*

With an aim to offer best technology products with above advantages at competitive prices MIXTRAP is committed to cater the needs of process industry.

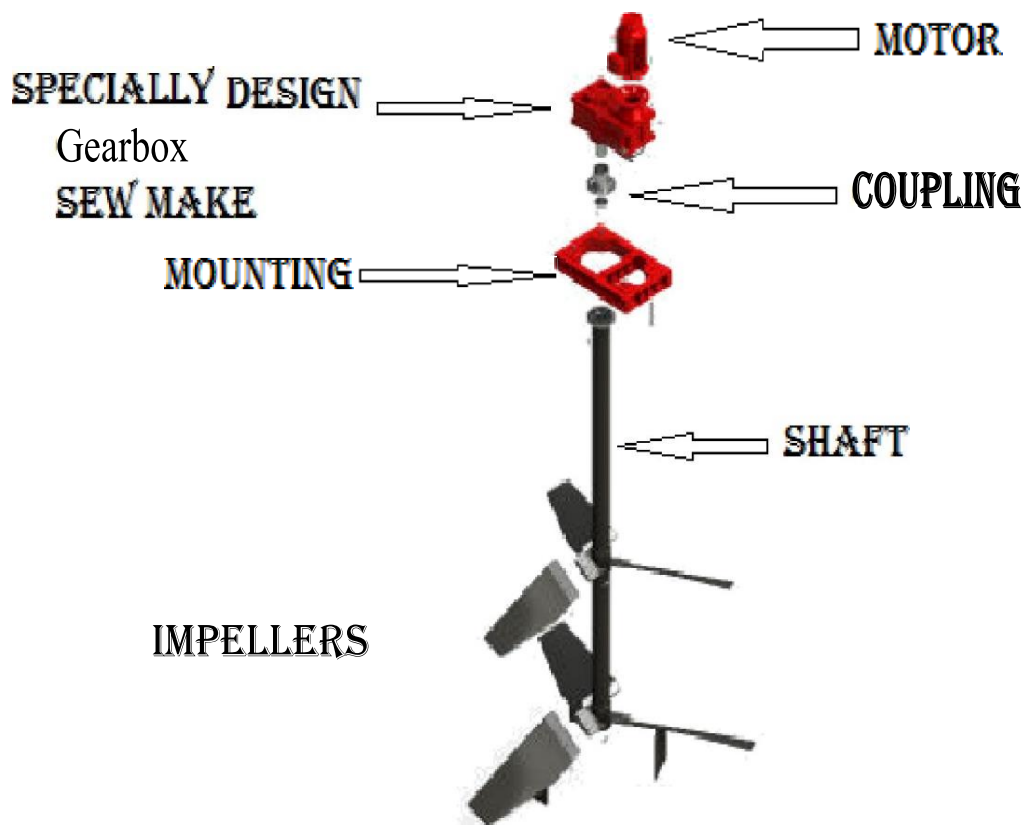
We trust that you will find our design suitable for your various plants and process equipments related activities after going through the company profile. We assure you scheduled completion of your work with competitive price and state of the art quality.

Looking forward to your favorable response & valuable enquiries for our future association

Thanking You in Anticipation,

Yours Sincerely

Prashant Raul - +91 9075588855
Director



COMPANY PROFILE

Mixtrap Solutions Pvt Ltd is established in Year 2016 with a team of more than 100 Years of group experience in Process Equipment's; we believe that in any design there is always a thin line between over design and under design. Understanding the same is very important. Our Philosophy is to remain above to this thin line. This is possible only after detail understanding of customer's requirements. We understand the customer's requirements and interpret the same in our design, so that the Design becomes economical, easy to install and maintain. Capital cost & working costs both matter a lot for customers. We use appropriate automation and integrate system in such a way that both costs are balanced and does not cause burden either in short term or long term. We have come up with cost of ownership approach while helping our clients select the most appropriate design and equipment for their processes.

With our strength in designing, we caters to the wide spectrum of industry. Right from conceptual design of systems to execution with innovative solutions at every stage of project we emphasizes on optimization of various parameters like energy, cost, and operative excellence. The customer centric approach gives us an edge where we pride ourselves on contributing value to our customers.

We have our manufacturing facility at Bhosari to cater the business growth by manufacturing Process Equipment.

Though the area of approximately 20000 sq.ft. is very limited.

Our company's aim is to provide ultimate satisfaction to all our esteemed clients by maintaining best designs & highest manufacturing standards of quality at reasonable pricing. Mixtrap utilizes advanced technology to transform the traditional industry with constant innovations with a sense of responsibility, spirit of integrity, and drive for improvement.

Company Location:

Office & Factory add:Plot.No. 165/166, Sector-7, MIDC Bhosari, Pune: 411028

Company Area:

~20000 Sq. Feet, totally covered.

List of Calibrated Instruments:

- | | | |
|---------------------------|---|----------------------|
| 1. Vernire Caliper | - | 1No |
| 2. Dial Vernier | - | 1NO |
| 3. Micrometer | - | 2No (Covering range) |
| 4. Depth Vernier | - | 1 No |
| 5. Dial Gauge with Stand- | | 1 No |
| 6. Bore Gauge 18x35 | - | 1 No |
| 7. Bore Gauge 50 x 150 | - | 1 No |
| 8. ID Micro meter | - | 1 No |
| 9. Pressure Gauge | - | All range |
| 10. D meter | - | 1 No |
| 11. Sound meter | - | 1 No |
| 12. Vibration meter | - | 1 No |

List of Machineries @ Mixtrap Shop, Plot # 165/166

1. Lathe LM1-Capacity – Between Center 4.5m/Center height- 20”
2. Lathe LM2-Capacity – Between Center 1.8m/Center height- 12”
3. Drill R1-Capacity – 3mm to 80mm drill – 1 Quantity
4. Welding Machine
TIG Welding – 12 Nos.
ARC Welding Inverter – 3 Nos.
5. 2 No Plasma Machine with 5.0HP compressor – Up to 40mm cutting
6. Polishing system
7. 400 AMP WELDING RECTIFIER WITH INBUILT WATER COOLING (TIG M/C) ALONG WITH STD. ACCESSORIES

8. 4x 7" GRINDER 2400 WATT
9. 5 x 5" GRINDER 1200 WATT
10. 2 x 4" GRINDER 800 WATT
11. GAS CUTTER SET WITH LPG REGULATOR
12. POLISHING M/C- TROLLY MOUNTED ZG TYPE 2HP 3 PHASE
13. HYDRO TEST PUMP 140 KG CAPACITY WITH STD ACCESSORIES – 2 Nos

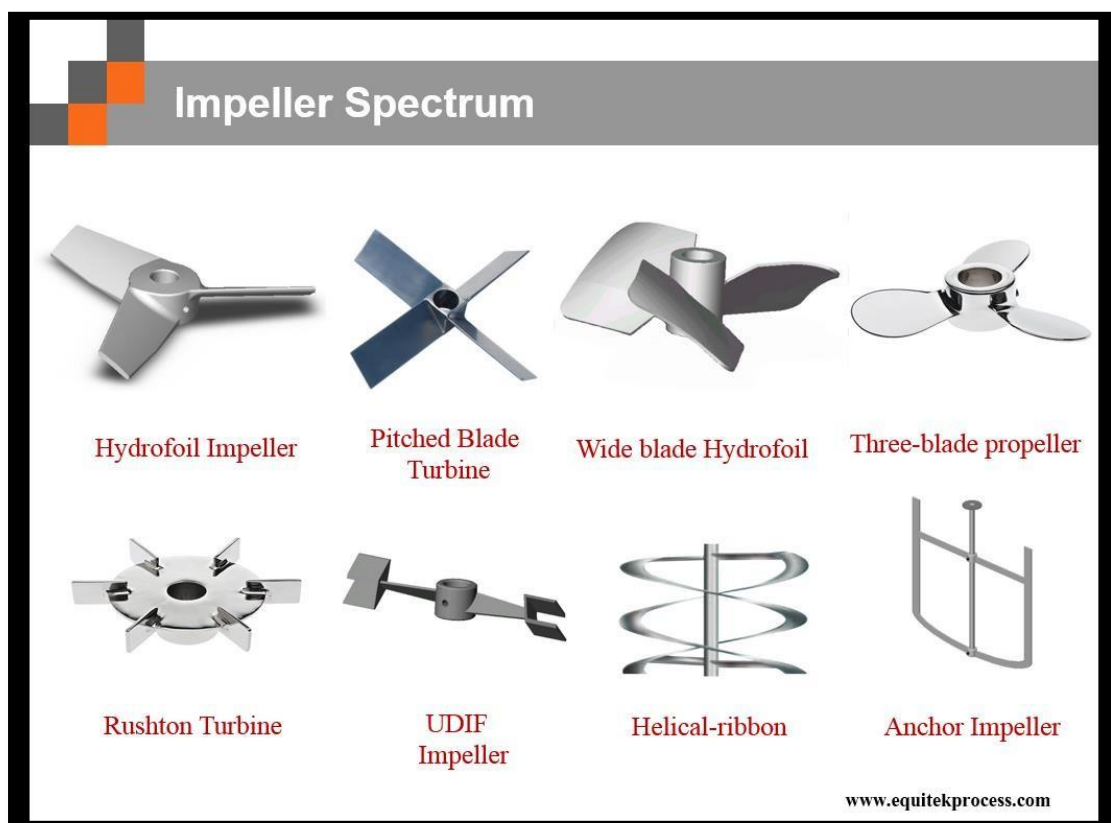
List of Machineries @ Mixtrap's Dedicated Sub-vendor

1. Lathe LM1-Capacity – Between center 2.5m/Center height- 12"
2. Lathe LM2-Capacity – Between Center 6.0 m/ Center height – 21"
3. Lathe LM3-Capacity – Between Center 4.5 m/Center height- 18"
4. Lathe LM4-Capacity – Between Center 3.0 m/Center height- 15"

Speciality @ Mixtrap's Design

1. We exclusively use SEW/NORD gear drive wherein we can avoid use of external bearing housing & hence can offer maintenance free Agitator unit.
2. We can conduct CFD on client demand. Although almost all agitator manufacturer claim CFD reports, we have a person working on agitator CFDs since last 8 years & hence we can exactly interpret the CFD results & recommend/judge change if required in design.

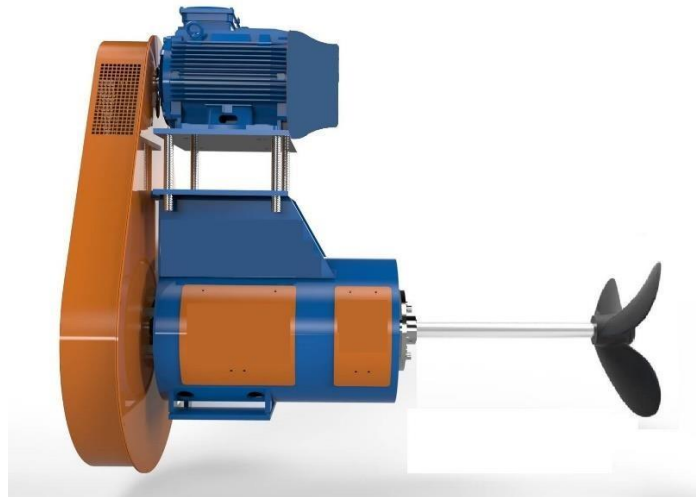
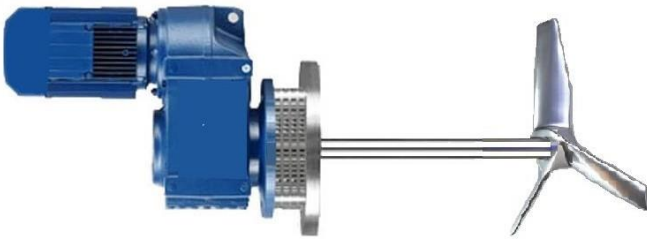
Impellers used by Mixtrap Process :-



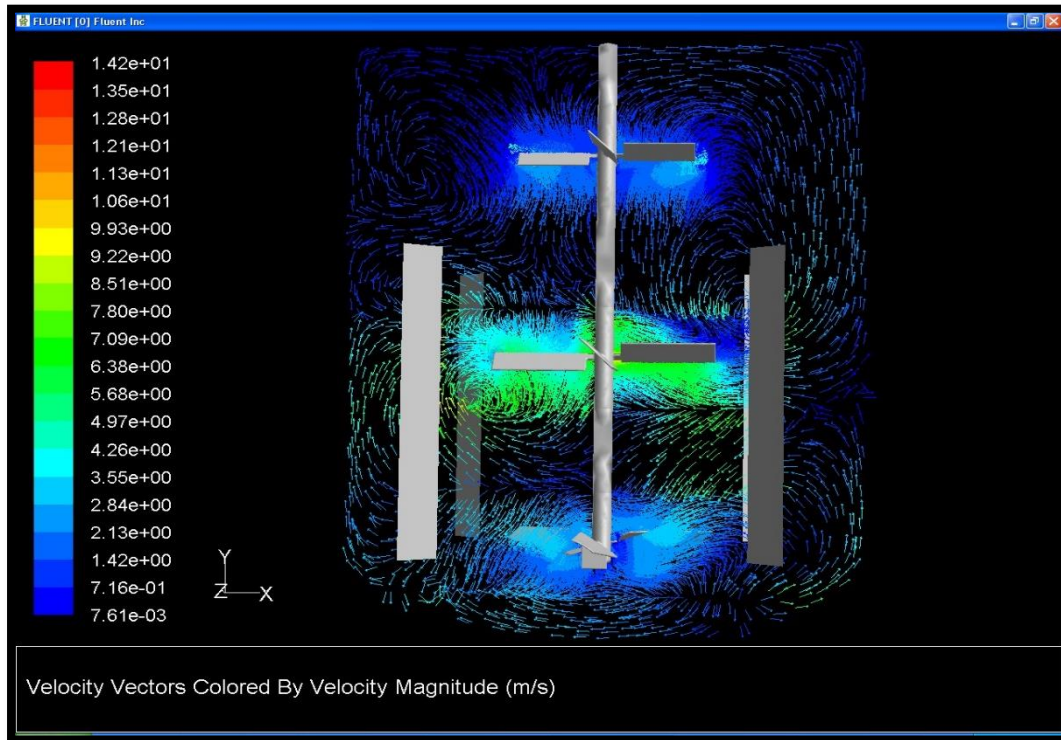
Top Entry Agitator :-



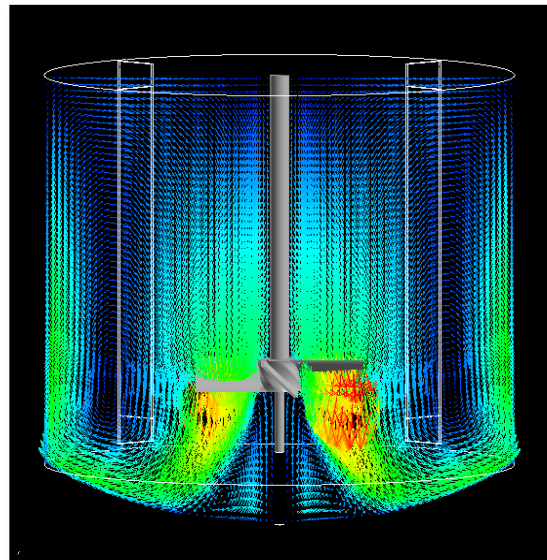
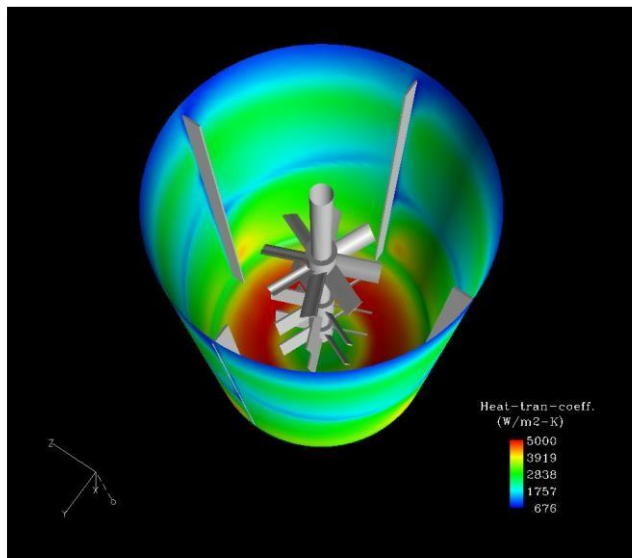
Side Entry Agitator :-



CFD View in Vessel with Agitator :-



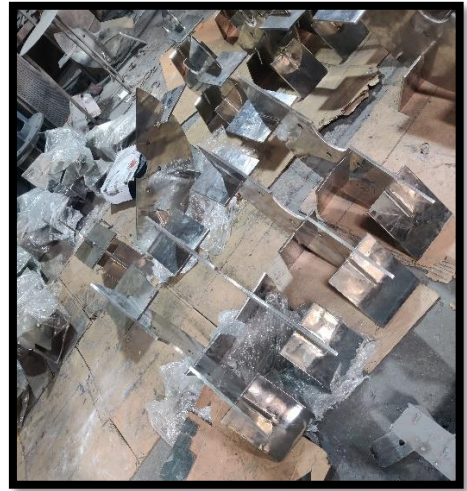
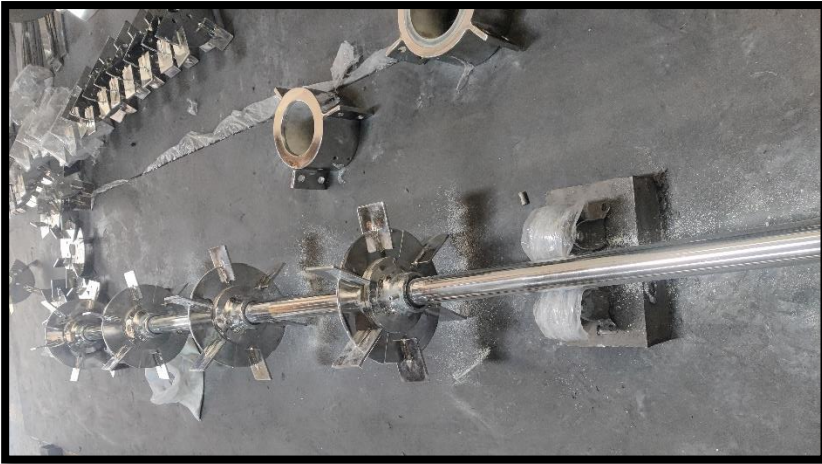
CFD Analysis Results :-



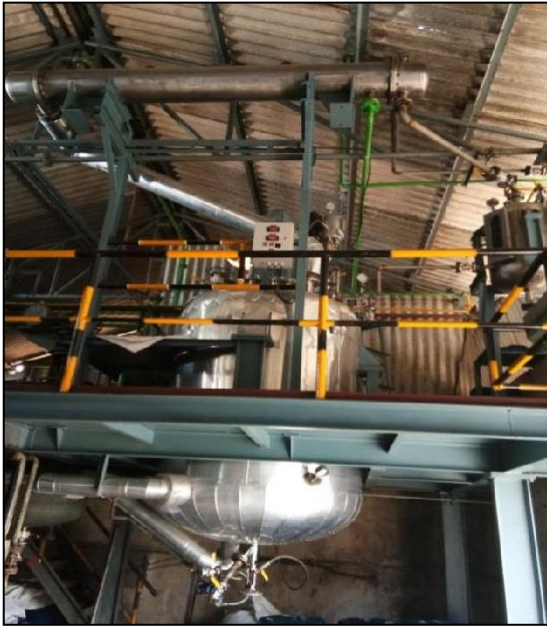
Major Installations...



Some Executions :-









Shop Floor :-

